

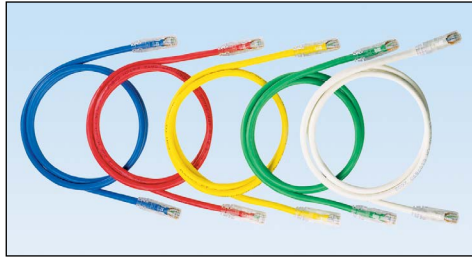
NetKey® Category 6 UTP Patch Cords

PANDUIT®

DATA SHEET

specifications

Category 6/Class E patch cords are constructed of UTP 24 AWG stranded copper cable and a modular plug at each end. Patch cords are used in all work area outlets and patch panels. Patch cords are wired to be compatible with both T568A and T568B wiring schemes.



technical information

| | |
|--|--|
| Category 6/Class E performance: | Exceeds ANSI/TIA-568-C.2 Category 6 and ISO 11801 Class E channel requirements at swept frequencies up to 250 MHz Meets ANSI/TIA-568-C.2 and ISO 11801 Category 6 component requirements at swept frequencies up to 250 MHz |
| Cable diameter: | 0.235 in. (6.0mm) nominal |
| FCC compliance: | Complies with ANSI/TIA-1096A (formerly FCC Part 68); contacts plated with 50 microinches of gold |
| IEC compliance: | Meets IEC 60603-7 |
| PoE compliance: | Supports IEEE 802.3af/802.3at and proposed 802.3bt type 3 and type 4 PoE applications |
| Safety compliance: | cULus Listed; UL 1863 and CAN/CSA-C22.2 (UL File E129886) |
| RoHS compliance: | Compliant |
| Flammability rating: | CM rated |

key features and benefits

| | |
|--|--|
| 100% performance tested | Confidence that each patch cord delivers specified performance |
| Patented tangle free latch | Prevents snags and provides easy release |
| Slender strain relief boot | Provides easy access in high-density applications |
| Identification | Provides identification of performance level, length, and quality control number for future traceability |
| Variety of colors and lengths available | Meets individual length and color-coding requirements |

applications

Applications include:

- Ethernet 10BASE-T, 100BASE-T (Fast Ethernet), and 1000BASE-T (Gigabit Ethernet)
- 155 Mb/s ATM, 622 Mb/s ATM, 1.2 Gb/s ATM
- Token Ring 4/16
- Voice over internet protocol (VoIP)

www.panduit.com

NetKey® Network Components

NetKey® Category 6 Patch Cords

Foot lengths: NK6PC3*Y
Meter lengths: NK6PC1M^Y

NetKey® Category 6 Jack Modules

Module: NK688M**
Convenience pack of 25 modules: NK688M**-Q

NetKey® Category 6 Punchdown Patch Panels

12-port: NK6PPG12WY
24-port, 1 RU: NK6PP24P
48-port, 2 RU: NK6PP48P

*For standard lengths other than 3 feet (5, 7, 10, 14 or 20) change the length designation in part number to the desired length. For standard cable colors other than Off White, add suffix BU (Blue), GR (Green), RD (Red), or YL (Yellow) before the Y at the end of the part number. For example, the part number for a blue 5 foot patch cord is NK6PC5BUY.

^For standard lengths other than 1 meter (2, 3, 4 or 5) change the length designation in part number to the desired length. For standard cable colors other than Off White, add suffix BU (Blue), GR (Green), RD (Red), or YL (Yellow) before the Y at the end of the part number. For example, the part number for a blue 5 meter patch cord is NK6PC5MBUY.

**To designate a color, add suffix IW (Off White), EI (Electric Ivory), IG (Int'l Gray), WH (White), BL (Black), OR (Orange), RD (Red), BU (Blue), GR (Green), or YL (Yellow).

NetKey® Category 6 UTP Patch Cords



WORLDWIDE SUBSIDIARIES AND SALES OFFICES

PANDUIT CANADA
Markham, Ontario
cs-cdn@panduit.com
Phone: 800.777.3300

PANDUIT EUROPE LTD.
London, UK
cs-emea@panduit.com
Phone: 44.20.8601.7200

PANDUIT SINGAPORE PTE. LTD.
Republic of Singapore
cs-ap@panduit.com
Phone: 65.6305.7575

PANDUIT JAPAN
Tokyo, Japan
cs-japan@panduit.com
Phone: 81.3.6863.6000

PANDUIT LATIN AMERICA
Guadalajara, Mexico
cs-la@panduit.com
Phone: 52.33.3777.6000

PANDUIT AUSTRALIA PTY. LTD.
Victoria, Australia
cs-aus@panduit.com
Phone: 61.3.9794.9020

For a copy of Panduit product warranties, log on to www.panduit.com/warranty

For more information

Visit us at www.panduit.com

Contact Customer Service by email: cs@panduit.com
or by phone: 800.777.3300

PANDUIT®

©2015 Panduit Corp.
ALL RIGHTS RESERVED.
NKDS31--WW-ENG
6/2015